

Fasciotomy Closure

History

This 19-year-old male soldier crashed his motorcycle and sustained a bilateral crural fracture and a femoral fracture. The patient received intramedullar pins in both tibia and bilateral fasciotomies. The ABRA Adhesive Skin Closure System was installed 24 hours after the fasciotomy to achieve primary closure of the wound.

Case study courtesy of Dr. J.A.C. Gazendam MD PhD FECS, Trauma Surgeon, Netherlands.



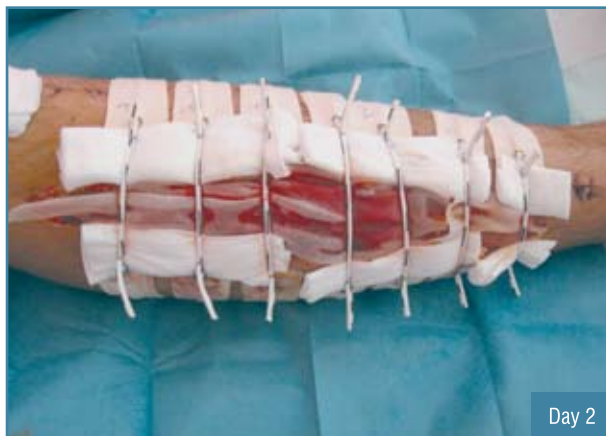
Day 1

On the ward, 24 hours after fasciotomy.



Day 1

On the ward, 24 hours after fasciotomy. ABRA Adhesive Skin Closure System installed, with no tension set.



Day 2

ABRA Adhesive Skin Closure System re-approximating wound margins. Rolled gauze placed in front of anchors to absorb fluids and ensure adhesion of anchors.



Day 6

ABRA Adhesive Skin Closure System achieves primary closure. Wound closed on ward with local anesthesia.