

## Obese Abdominal Skin Closure Case (Over Mesh)

### History

This is a severely retracted abdominal wound in an obese middle-aged female. The patient had been treated for retroperitoneal bleeding by packing the abdomen open. Approximately three days after the event, she was brought back to the operating room and mesh was put on to stabilize the wound.

### Treatment

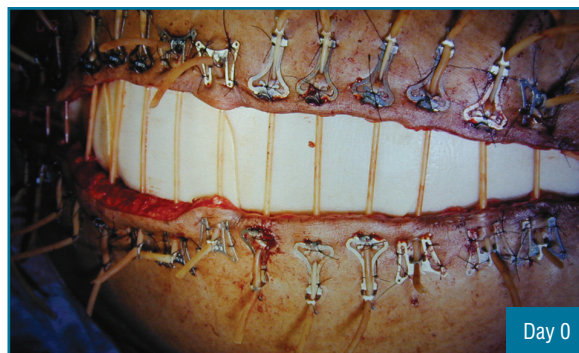
First photo as presented; in the second photo the Dynamic Wound Closure System elastomer has been applied through the skin edge like a retention stitch. Simply applying system tension dramatically reduced the wound size and restored abdominal skin system integrity.

At fourteen days, the wound is nearly closed. The wound edges are showing minor stresses due to the high closure tensions required, but remain viable.

At twenty one days, the wound edges have met along the entire length of the incision and are ready for conventional closure.



As presented to Plastics for closure.



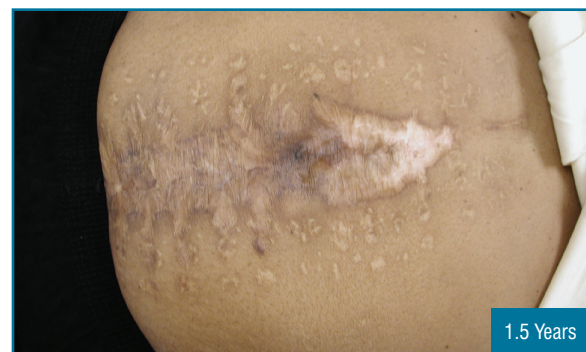
ABRA® Surgical Skin Closure System applied.



At two weeks the wound margins are re-approximating.



By the third week, the wound edges have fully re-approximated.



Follow-up at one and a half years.

As can be seen in the 1.5 year follow-up, some wound dehiscence occurred after the successful primary closure. Although not yet developed at the time of this case, the ABRA Adhesive Anchor system could now be used post-operatively. This would effectively isolate the primary closure from retractive forces, preventing dehiscence and resulting in an improved cosmetic result.

*Note: Product shown is not current.*